

DOSSIÊ DE INTERVENÇÕES

SOMBRA

SOMBRA

É uma necessidade e a primeira ideia de permanência. Não há sombra pública na Rua 25 de Março, aquela que qualquer um pode ficar por um tempo.

OBJETIVOS:

Ser a sombra pública, animada por uma instalação

GENEROSIDADE PAUSA TERRITORIEDADE

REFERÊNCIAS:

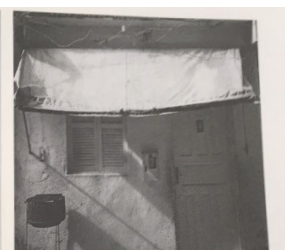


Blue canvases providing shade in an open market, Rio de Janeiro

09

BLUE CANVASES
SUN PROTECTION IN A PUBLIC SPACE

During the long hot summer days of Brazil, finding refuge from the sun is important. Covering streets, squares, and marketplaces, *blue canvases* provide a refreshing shade. Because it is the cheapest plastic tarp available, it is used everywhere. The blue color adds a psychological cooling aspect just like in Schloss Augustsburg in Brühl, Germany, where the winter apartment is painted in reddish colors and the summer apartment in bluish colors. Perhaps as a reference to the sky or the ocean, blue canvases add to the richness of colors (21) in Brazilian cities.



A toldo on an entrance in Rio das Pedras, Rio de Janeiro

72

TOLDO
INTERIOR DESIGN
COMING TO THE STREETSCAPE

A *toldo* is a fixed or adjustable canopy with a metal or wooden framework. It usually projects window and door openings and is composed of a stretchable material like canvas, acrylic fiber, cotton, or polyester. With its colorful patterns, it can be used for decorative purposes or can display advertisements. A *toldo* can be used to provide shade for a *one-man kiosk* (41) or a *shop-workshop* (55).



Rio das Pedras, Rio de Janeiro

60

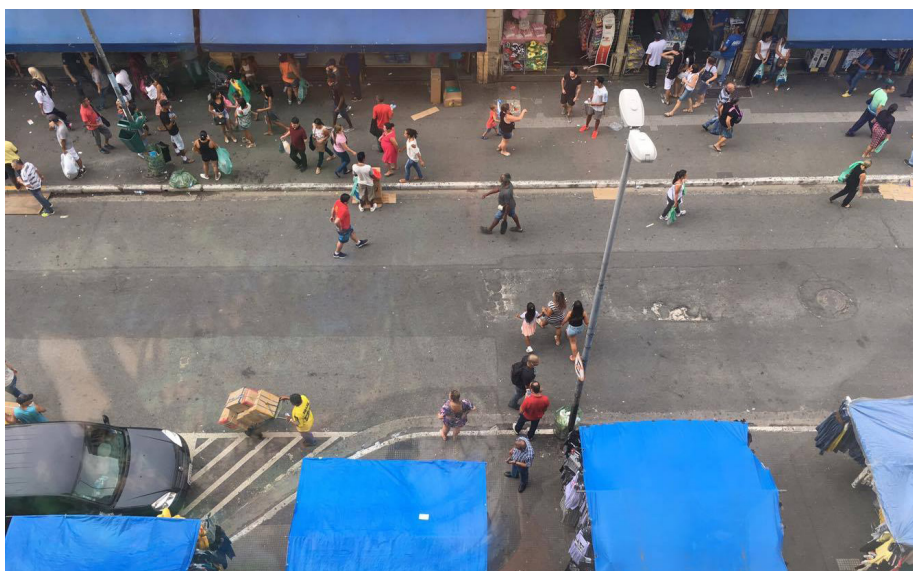
SOMETHING ABOVE YOUR HEAD
GUIDING OR THREATENING?

Something above your head refers to all of the elements that hang above pedestrians as they walk through a Brazilian city—including cables, plants, laundry, and banners. Together, all of these elements compose a layer that is integral to the identity of the street. This overhead collage creates a particular atmosphere for public spaces, and when the sunlight flickers through it, it creates beautiful effects.

UMA OUTRA PESQUISA

(Minha Casa, Nossa Cidade: Innovating Mass Housing for Social Change in Brazil AN INDEX OF POPULAR BRAZILIAN ARCHITECTURE)

Uma perspectiva gringa para nossas arquiteturas



FATOS DA 25

(Acervo do Grupo)

As tendas e marquises existentes.



UM EXEMPLO

(Instalação e Mirante na cobertura da Casa do Povo)

Uma poética e bellissima referencia de algo possível de se fazer.