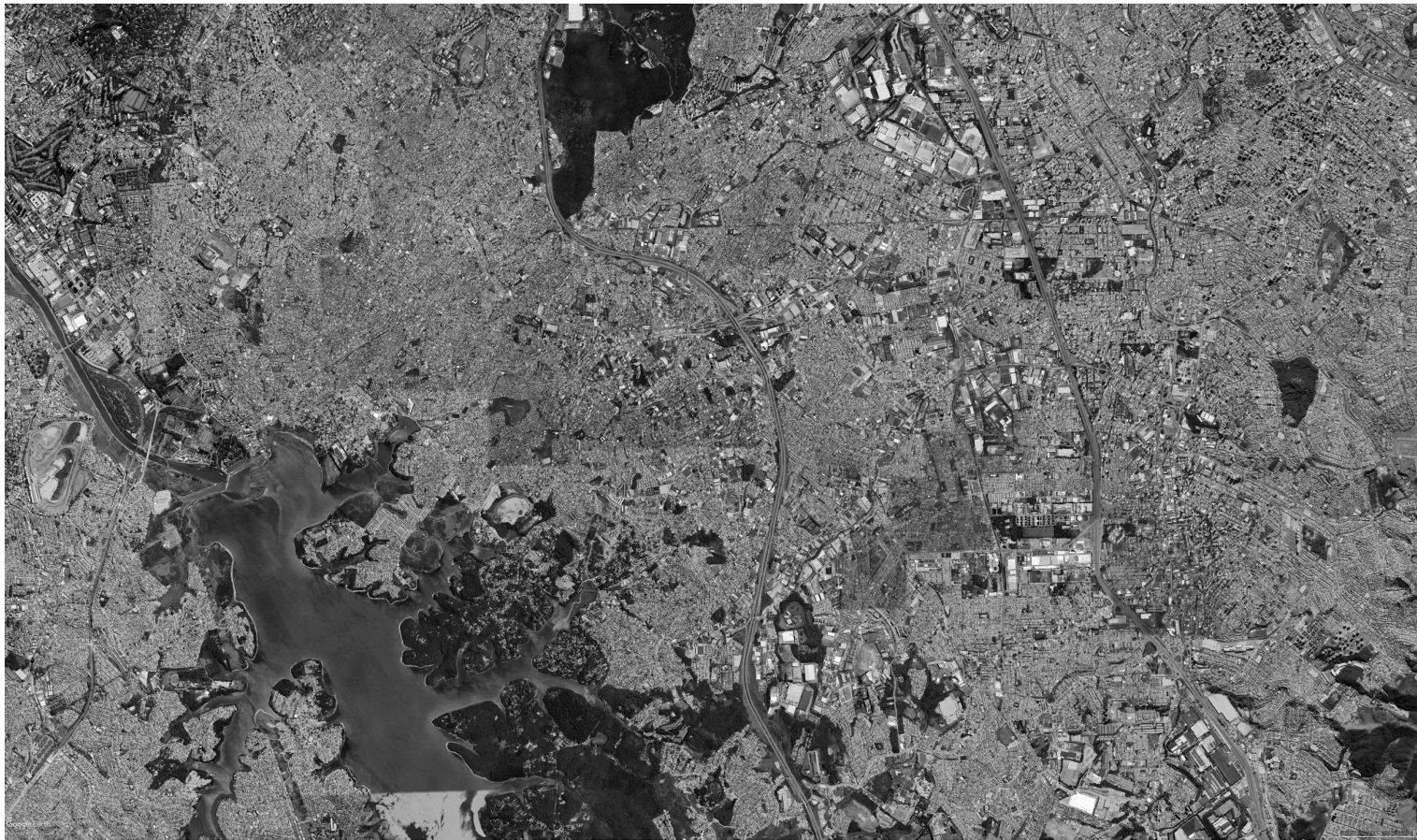




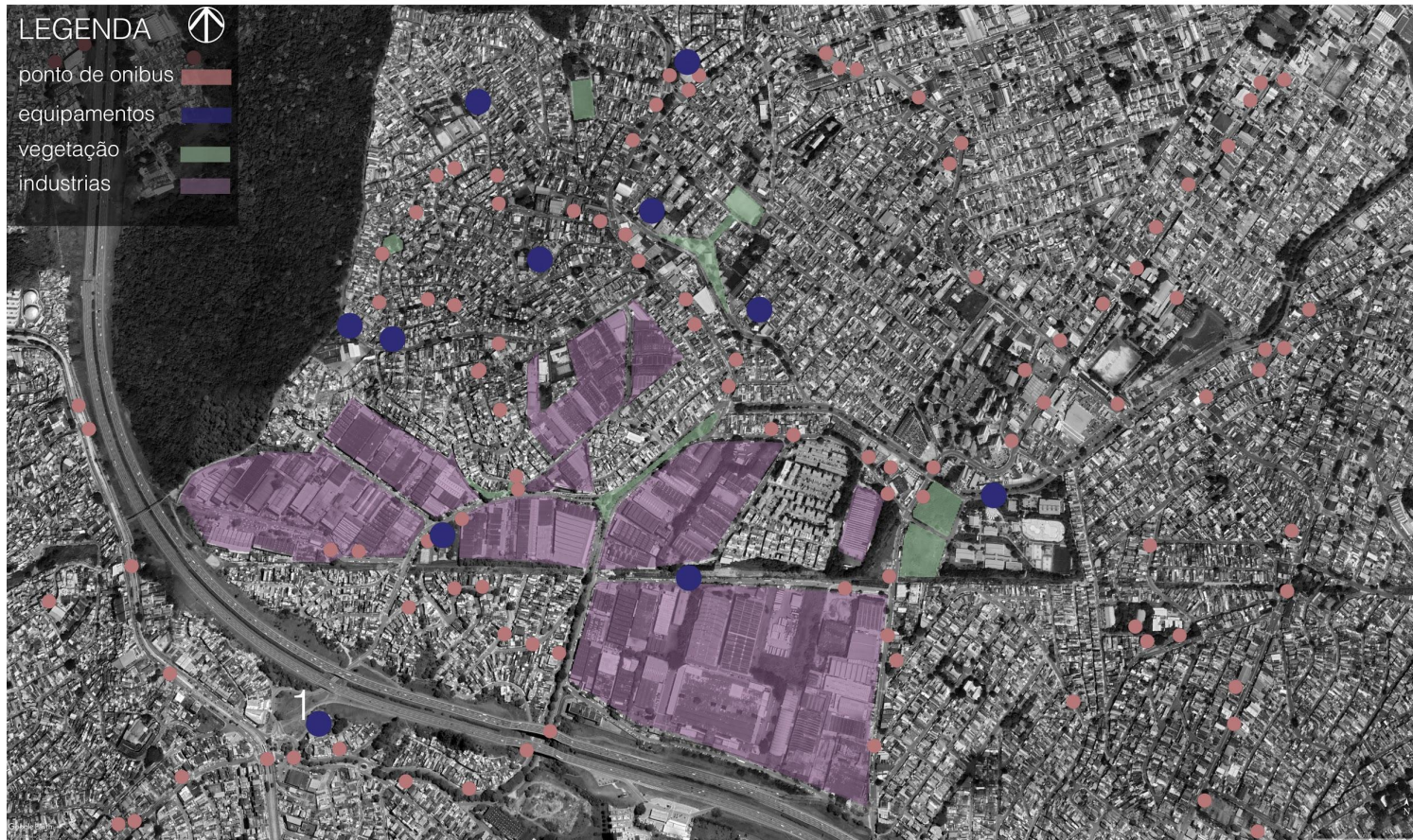
CAMPANÁ RIO

**VIELAS
PER
CURSOS E
ENCONTROS**

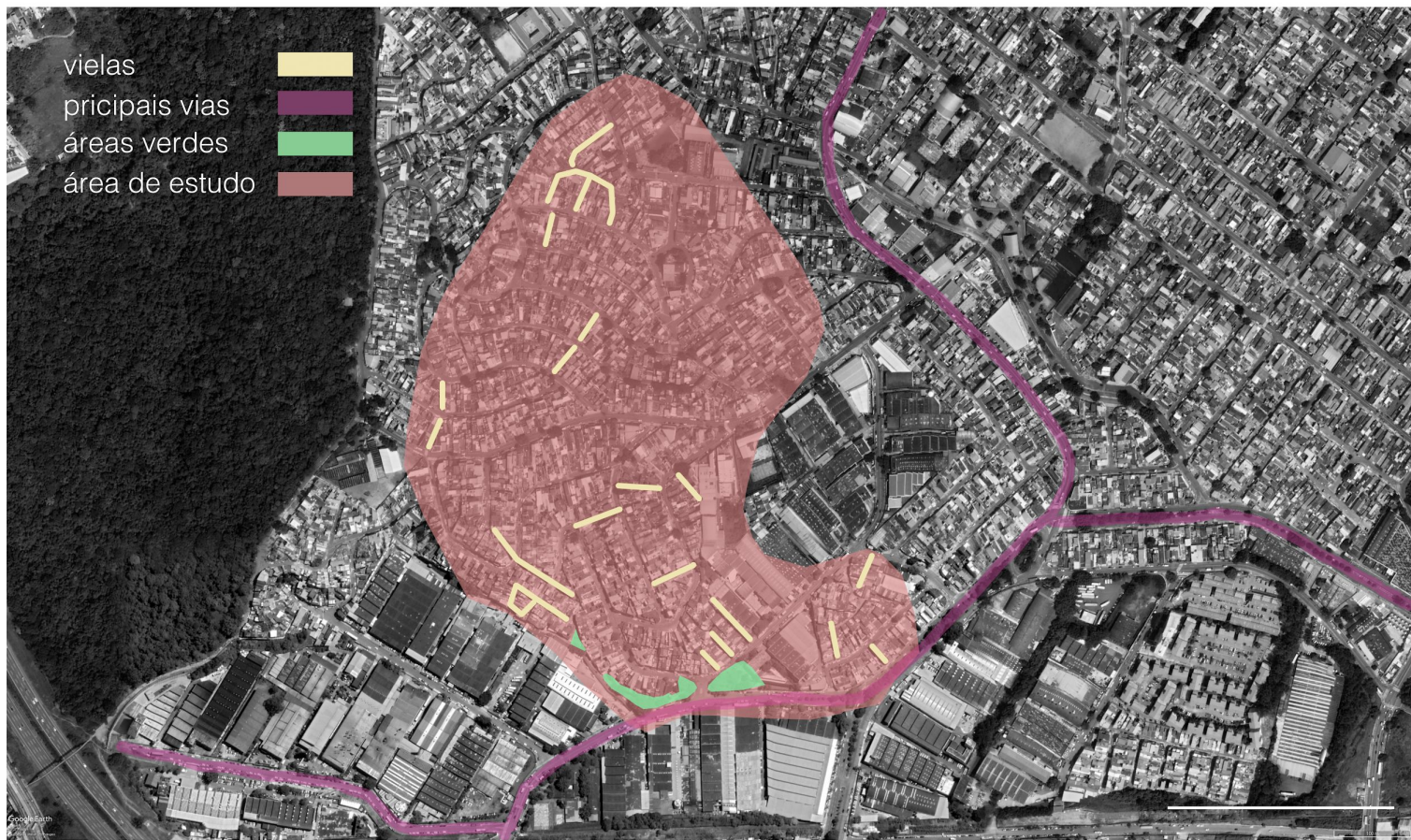
ANTONIO AYD
DANIEL PARENTE
IGOR HALIAN
LEO HASH
LUARA MACARI
TONY MATTOS



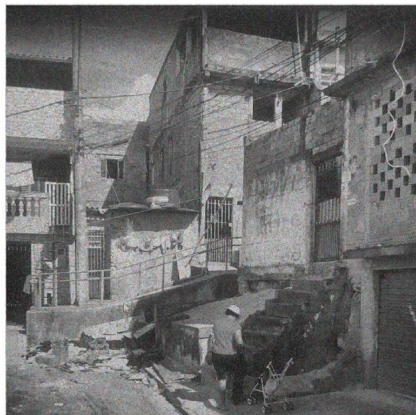
campanário, diadema



campanário em mapeamento



campanário, área de recorte



1



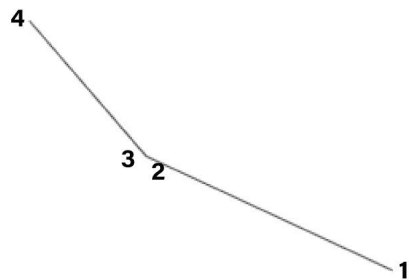
3



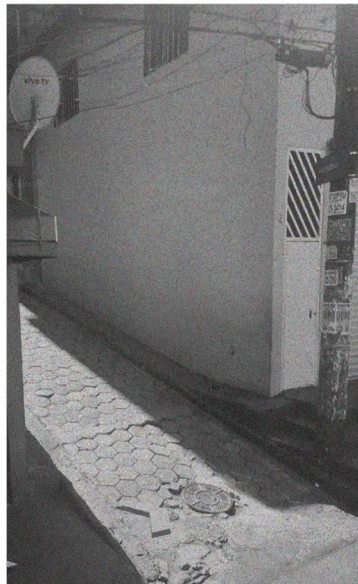
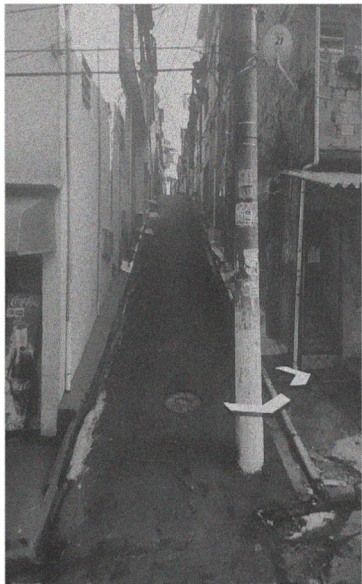
2



4



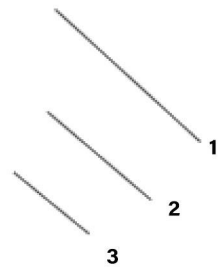
1 rua manóel bandeira
2 rua eça de quirós
3 rua eça de queirós
4 rua freitas de brito



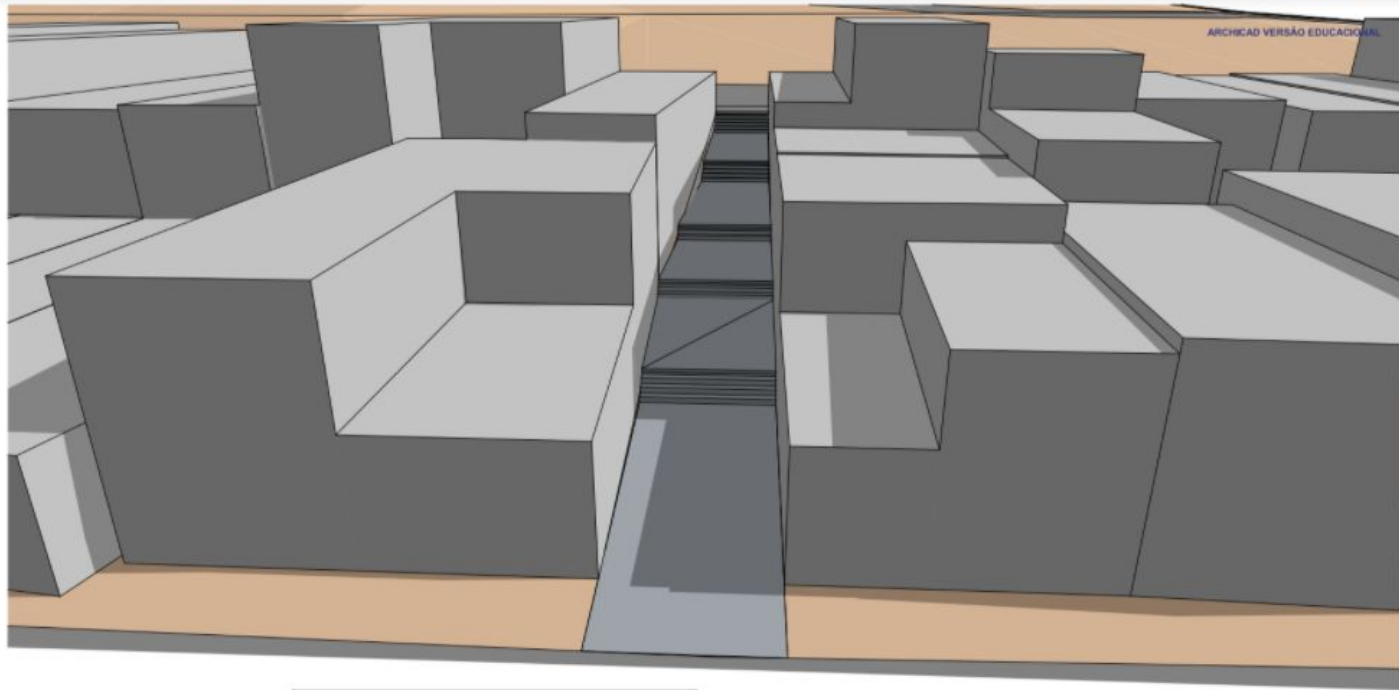
1

2

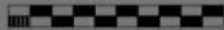
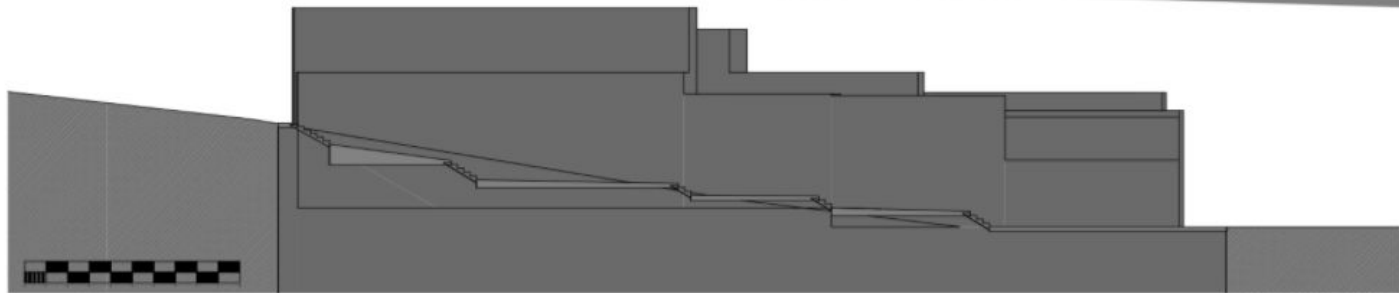
3



1 2 3 rua solimões



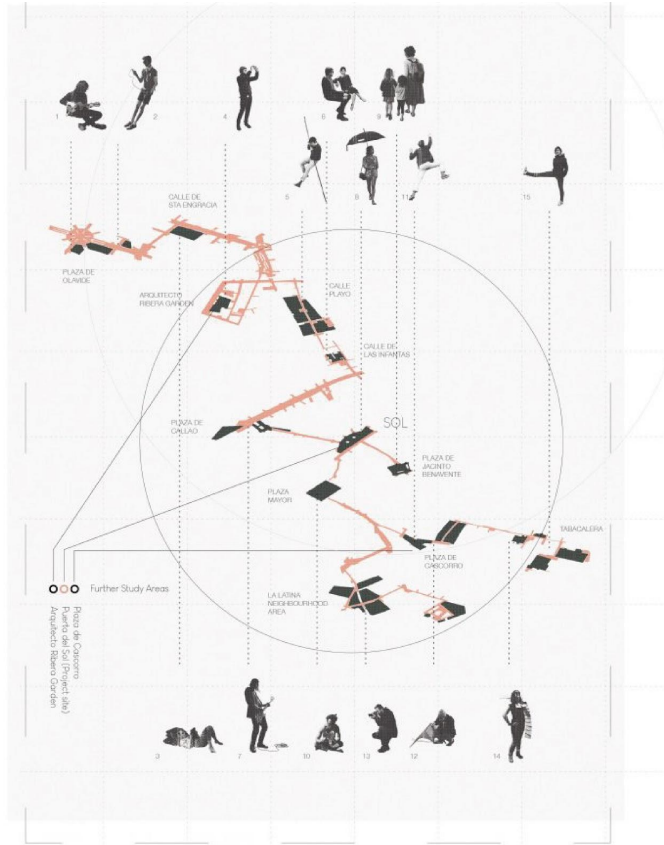
ARCHICAD VERSÃO EDUCACIONAL



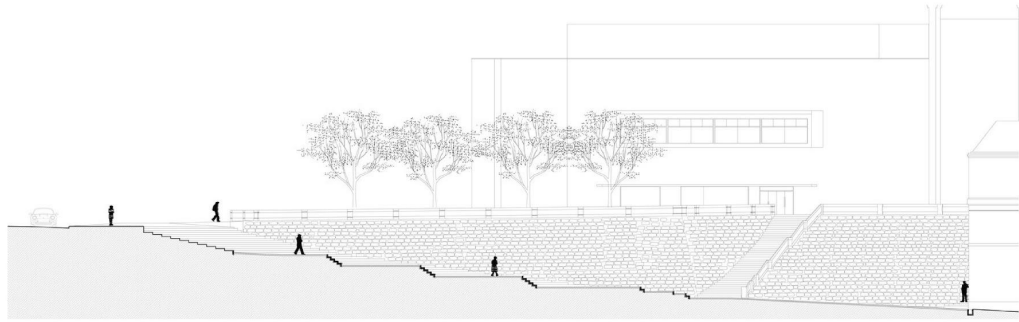
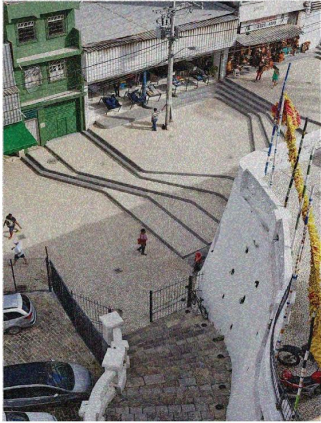
viela, rua gaivota



Guy Debord, Life continues to be free and easy

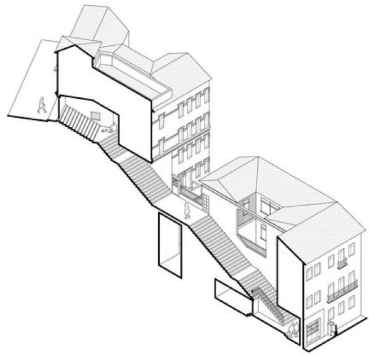


Matt Chi Fai Chan, The Glasgow School of Art, The Mackintosh School of Architecture. in: koozarch.com



corte a
(section a)





Valparaíso Público: 50 axonométricas de elevadores, escadarias e vielas

REF

RÊNCIAS

FLOREAT DIADEMA. **PLANO MUNICIPAL DE GESTÃO INTEGRADA DE RESÍDUOS SÓLIDOS DE DIADEMA**, 2001.

COSENHO MUNICIPAL DOS DIREITOS DA CRIANÇA E DO ADOLENTE; CONSELHO TUTELAR DE DIADEMA. **DIAGNÓSTICO MUNICIPAL DA REALIDADE DA CRIANÇA E DO ADOLECENTE**, 2008

LADEIRA DA BARROQUINHA / METROS ARQUITETOS ASSOCIADOS,
<https://www.archdaily.com.br/br/781582/ladeira-da-barroquina-metro-arquitetos-associados>

PRAÇA DAS ALMAS E DO NAZARENO / WATER SCALES ARCHITECTOS
<https://www.archdaily.com/890848/compas-de-las-animas-y-del-nazareno-waterscales-arquitectos>

FLOREAT DIADEMA. **PLANO MUNICIPAL DE GESTÃO INTEGRADA DE RESÍDUOS SÓLIDOS DE DIADEMA**, 2001.

VALPARAÍSO PÚBLICO: 50 AXONOMÉTRICAS DE ELEVADORES, ESCADARIAS E VIELAS

<https://www.archdaily.com.br/br/914068/valparaiso-publico-50-axometricas-de-elevadores-escadarias-e-vielas>

ARCHITECTURE: A Monument to the Present,
<https://www.koozarch.com/interviews/architecture-a-monument-to-the-present/>

Guy Debord, Life continues to be free and easy
<https://anchoraiparo.wordpress.com/thinking/>