

ev\_3031  
camilla abdallah  
isbela pusada  
leonardo mello  
mateus atalla  
matheus loschi  
thiago simbol

An aerial, high-angle photograph of a city grid, likely New York City, showing a dense pattern of buildings and streets. A prominent river, the Hudson River, flows diagonally from the top right towards the bottom left. The entire image is rendered in a monochromatic, reddish-pink color with a halftone dot pattern.

**aqui  
*tinha*  
um rio**

**LAPA**

**NOSSA SRA. DO Ó**

**BAIRRO DO LIMÃO**

**BARRA FUNDA**

**BOM RETIRO**

**LUZ**

**CANINDÉ**

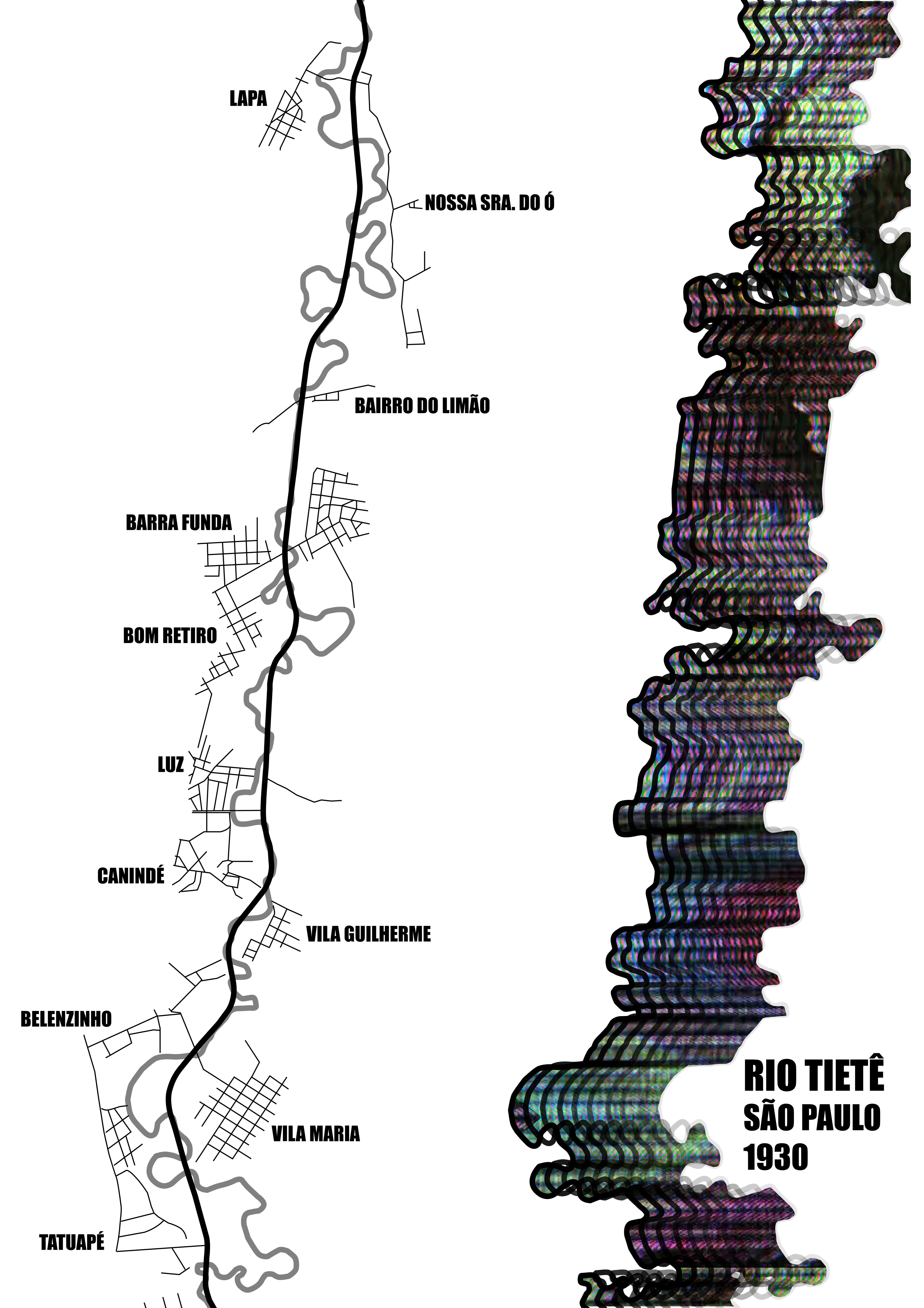
**VILA GUILHERME**

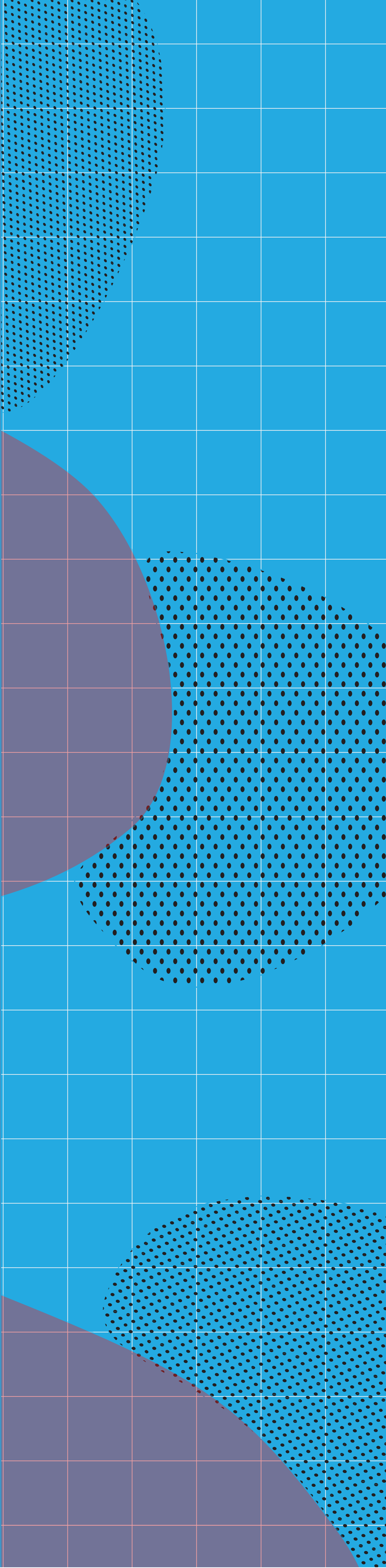
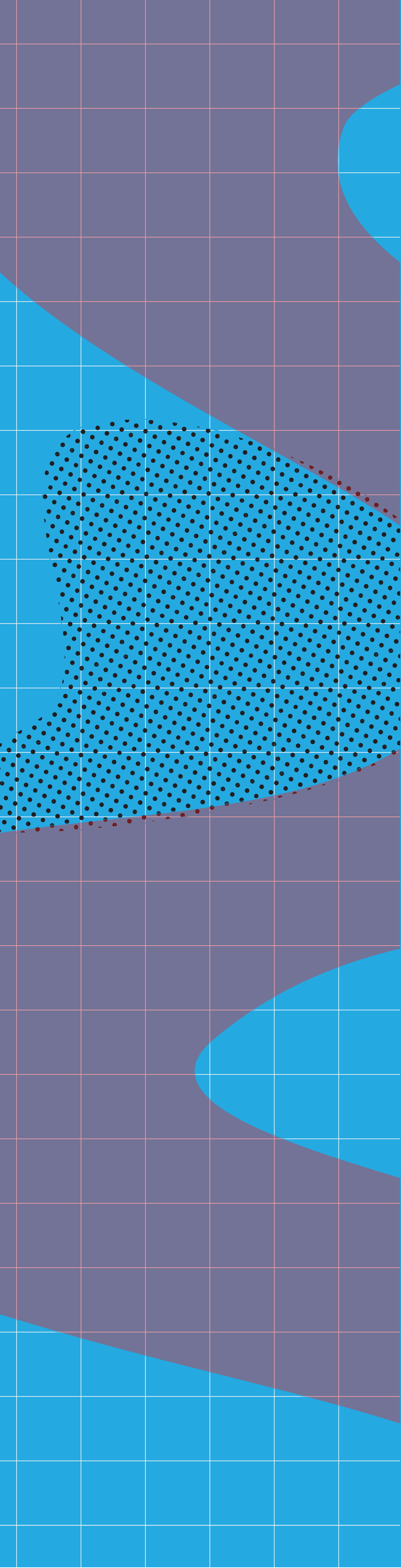
**BELENZINHO**

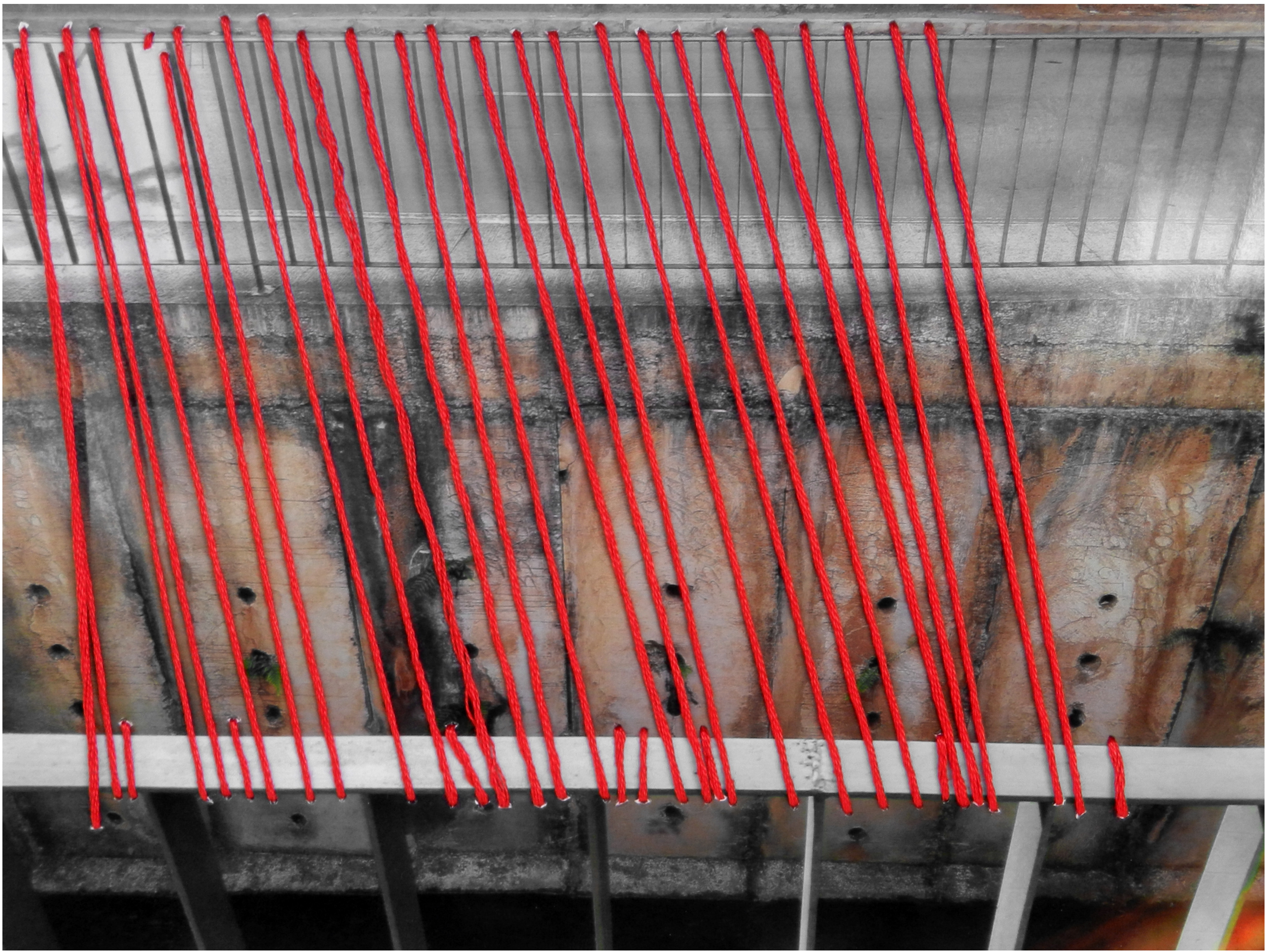
**VILA MARIA**

**TATUAPÉ**

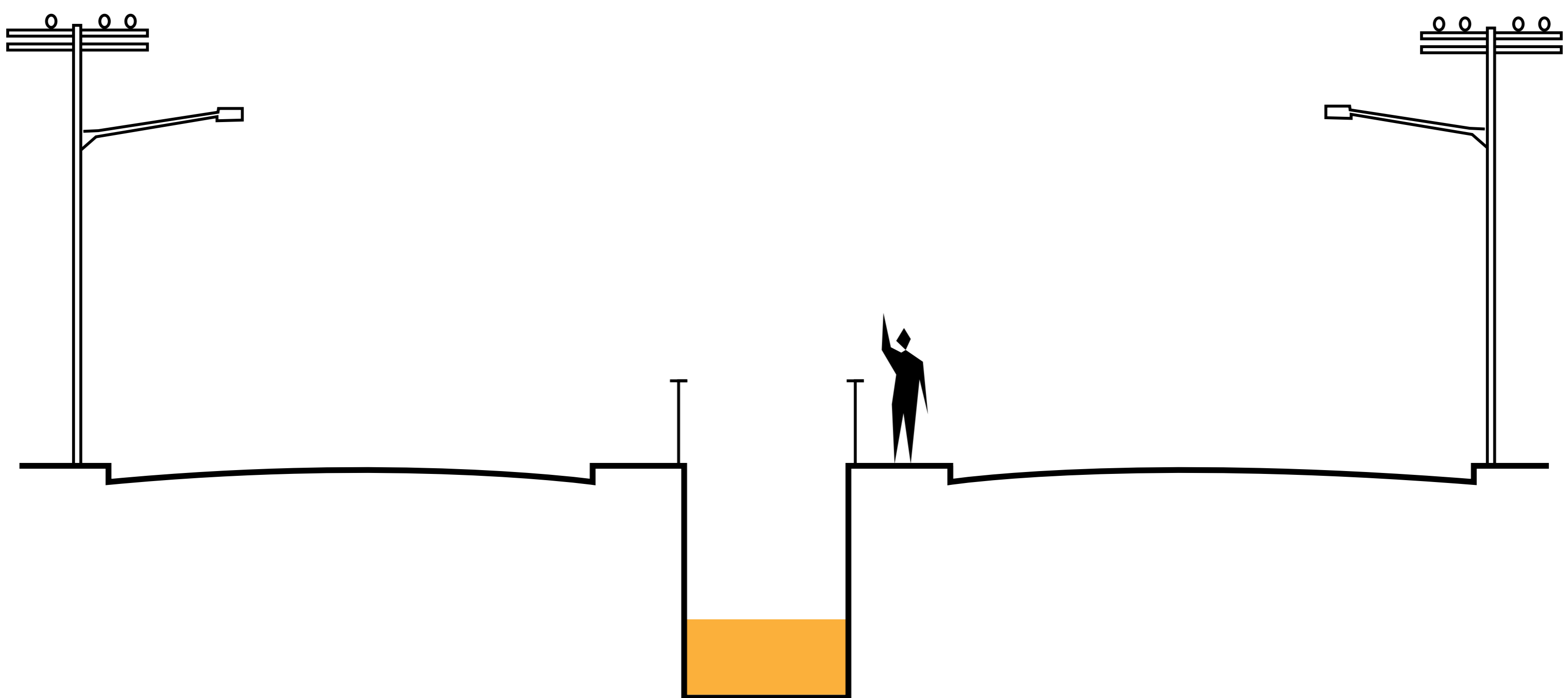
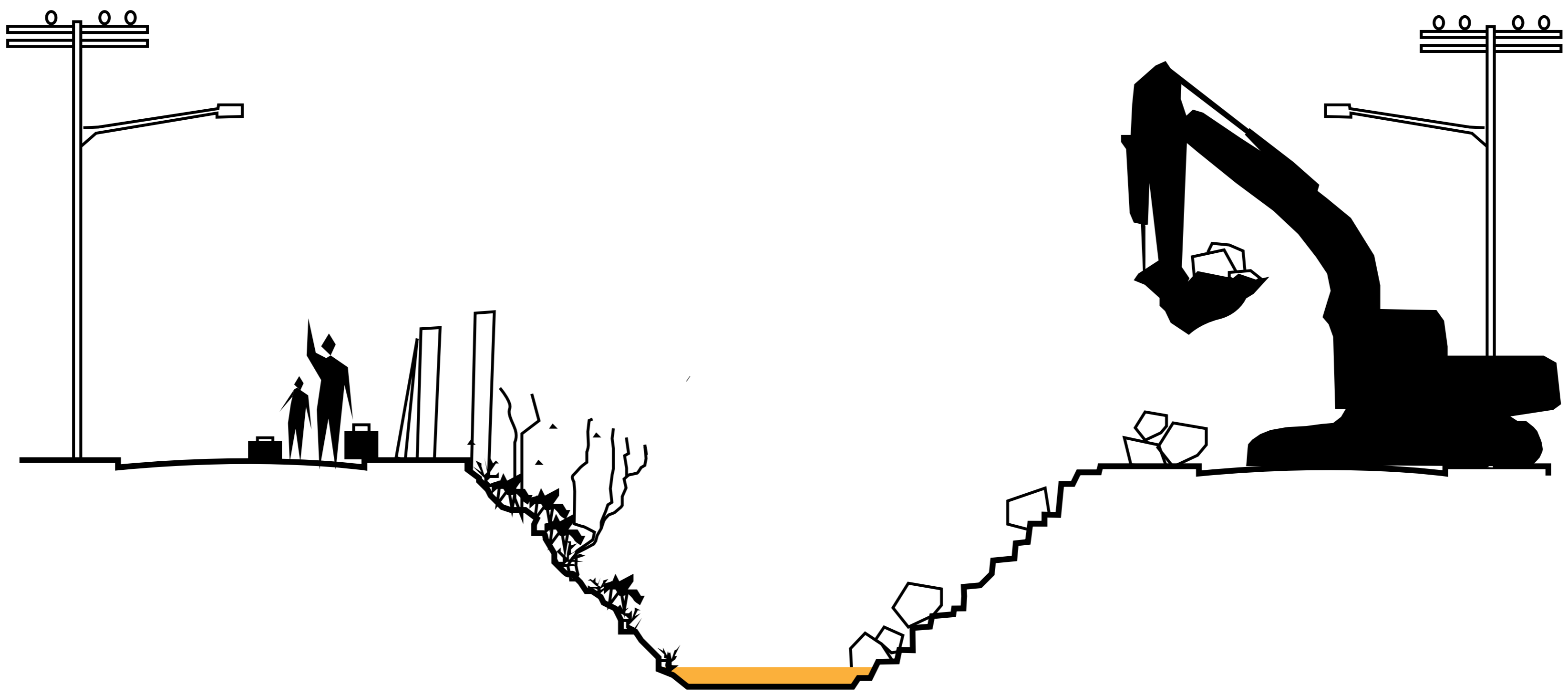
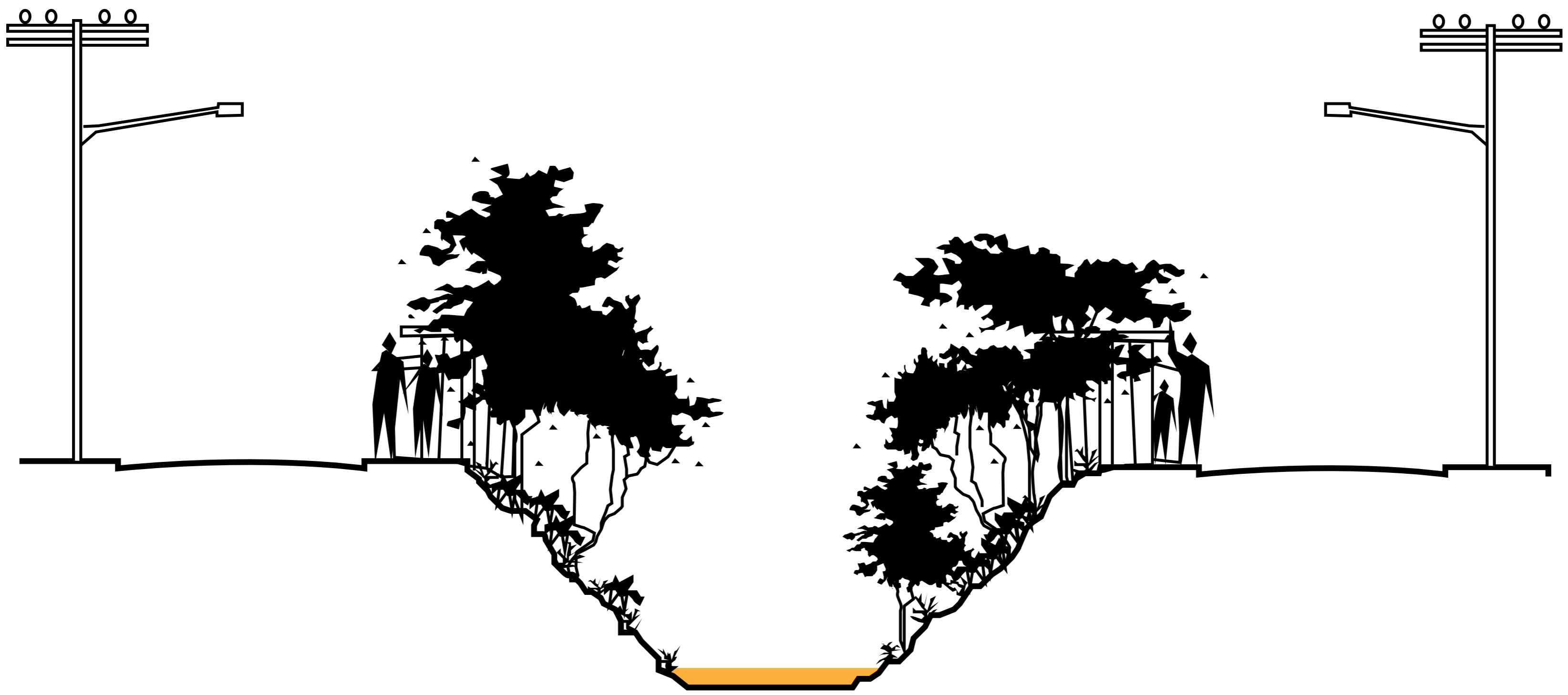
**RIO TIETÊ  
SÃO PAULO  
1930**





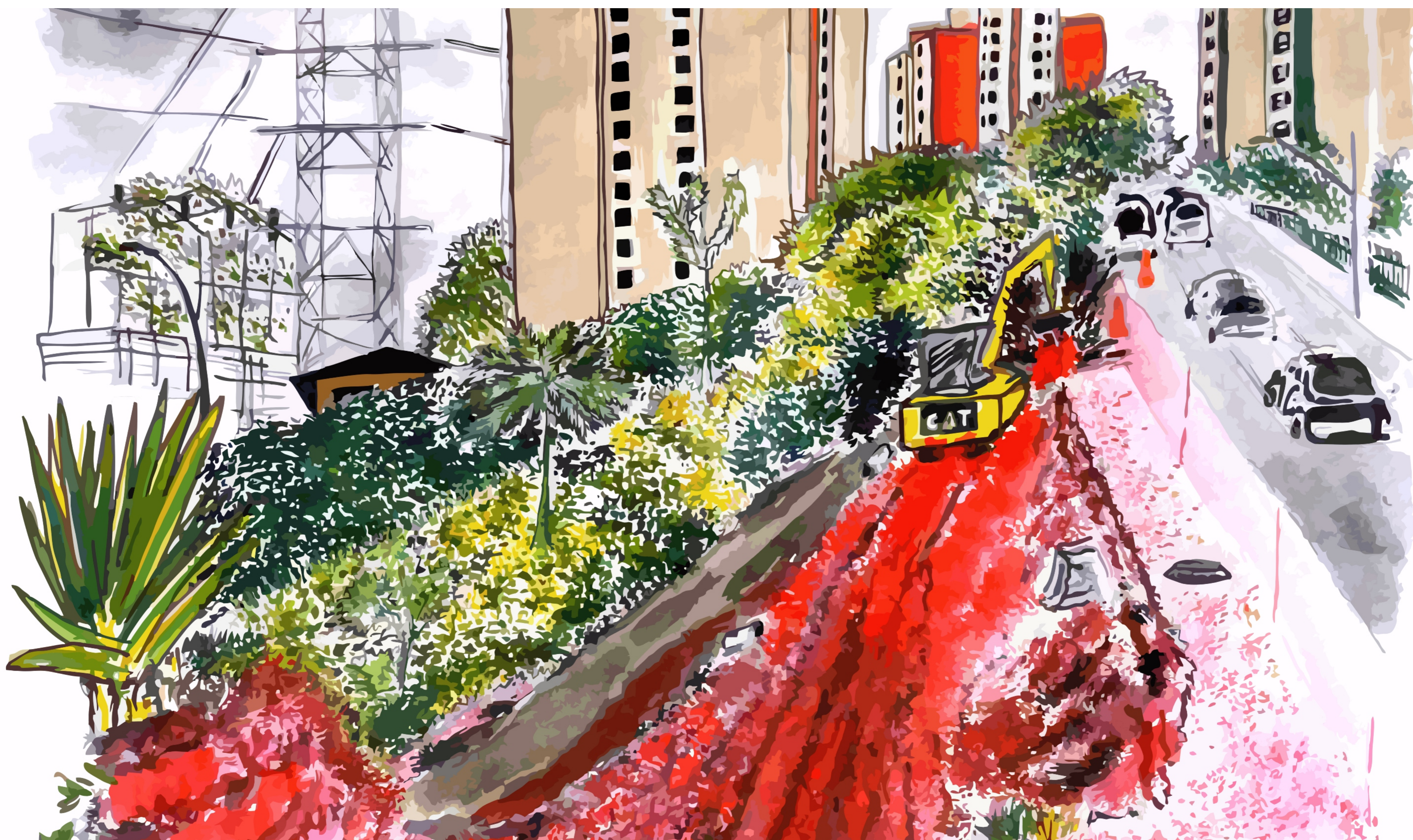


**COSTURAR  
CÓRREGOS**



# PREFEITURA DE OSASCO INICIA O ANO COM DIVERSOS ASSASSINATOS PELA CIDADE

7/1/2015 - Osasco - SP



**OS MORTOS: CÓRREGO CONTINENTAL;  
CÓRREGO RICO; CÓRREGO JOÃO ALVES;  
CÓRREGO BARONESA; CÓRREGO VILA MENCK.**



Obras para a "retenção de enchentes" matam diversos córregos e duplicam vias nas várzeas.

Os carros e o trânsito podem finalmente respirar.

208 famílias, a favela da divisa, foram expulsas, no jardim wilson. A morte do córrego continental, duplicou a avenida manoel pedro pimentel e passou por cima da favela pra acessar a várzea de um antigo morto, o rio pinheiros.

**A DIOCESE DE OSASCO REZARÁ UMA MISSA  
PARA VELAR O CORPO DOS MORTOS**